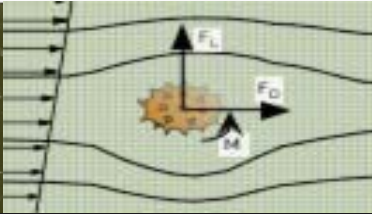
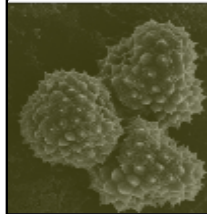


2003 Research Symposium on Environmental and Applied Fluid Mechanics

May 16, 2003 210 Hodson Hall, Homewood Campus, Johns Hopkins University

WELCOME

MICRO-FLUIDICS



| | | |
|-------|-----------------|---------------------------------------------------|
| 9:00 | Xiaobo Nie | Multiscale simulation of micro- and nano-fluidics |
| 9:25 | Zhizhong Yin | Bubbles in micro-fluidic applications |
| 9:50 | Colin Denniston | Interfaces in complex fluids |
| 10:15 | Rene van Hout | Micro-flow issues for pollen transport |

10:40-10:55 BREAK

OCEAN



| | | |
|-------|---------------|-----------------------------------------------------------------------|
| 10:55 | Zuoli Xiao | Ekman Turbulence |
| 11:20 | Daniel Lea | Monitoring the meridional overturning circulation in the Irminger Sea |
| 11:45 | James Kinsley | Navigation of underwater vehicles |

12:10-1:30 **LUNCH:** will be served in Krieger Hall Rm 70. This lab houses the 43,000 gallon water tank facility for underwater vehicle testing

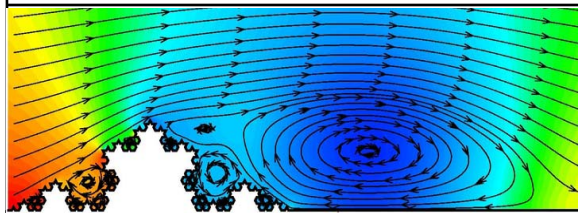
ATMOSPHERE



| | | |
|------|-----------------|-------------------------------------------------------------------------------------|
| 1:30 | Beatriz Funsatu | Potential vorticity inversion of intrusion events in the tropical upper troposphere |
| 1:55 | Jan Kleissl | Subgrid-scale eddy diffusion coefficients in the atmospheric surface layer |
| 2:20 | Mariana Adam | Atmospheric boundary layer and LIDAR investigation |

2:45-3:00 BREAK

COMPLEX FLOWS



| | | |
|------|----------------|-------------------------------------------------------------------|
| 3:00 | Yi Chih Chow | Turbulence in the wake and in the boundary layer of a rotor blade |
| 3:25 | Xiaozhen Lu | Stability aspects of slug flow |
| 3:50 | Jian Sheng | Shear-less turbulence near a wall |
| 4:15 | Stuart Chester | Inertial flow over fractal surfaces |