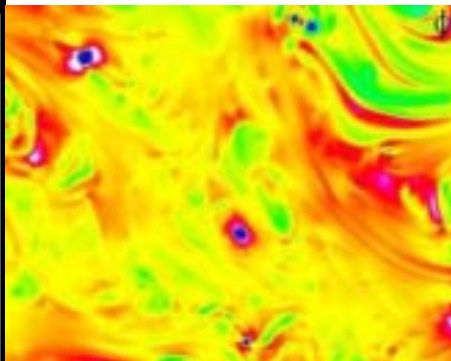


**Center for Environmental  
& Applied Fluid Mechanics**

8:40 **BREAKFAST**

9:00 **WELCOME**

**FUNDAMENTALS AND TECHNIQUES**



9:00 Minping Wan 2D inverse energy cascade

9:25 Jun Chen Rapid straining and destaining of turbulence

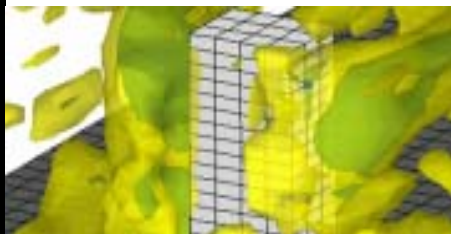
9:50 Xiaofeng Liu Instantaneous pressure distribution measurements by integrating material accelerations

10:15 Yu Zou Multiscale data assimilation with the ensemble Kalman filter

10:40 **BREAK**

10:50 Zhongzhen Zhang Navier-Stokes simulation of particulate flows

**ATMOSPHERES AND AIR**



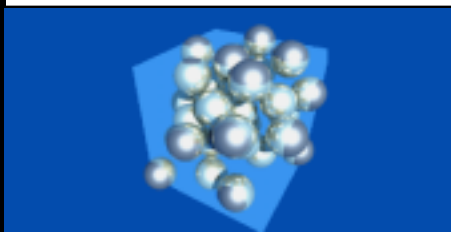
11:15 Steve Andreadis Tangent cylinder effects on Jupiter

11:40 Wusi Yue Large eddy simulations of canopy flow

12:05 Elie Bou-Zeid LES of neutral atmospheric boundary layer flow over heterogeneous surfaces: blending height and effective surface roughness

12:30 **LUNCH**

**SUBSURFACE**



2:00 Elizabeth Liu Lattice Boltzmann simulations of immiscible flow in porous media

2:25 Xiaofeng Xu Convective mixing in the long-term storage of carbon dioxide in deep saline formation

2:50 Nathan Haws Mass-transfer limitations and co-contaminant effects on the bioremediation of contaminated soils and sediments

3:15 **BREAK**

**OCEANS AND WATER**



3:30 Ben Rogers Advances in SPH for free-surface flows

3:55 Hong Zhang Relationships between tracer age and dynamical fields in unsteady wind-driven circulations

4:20 Luksa Luznik Turbulence in the bottom boundary layer of the coastal ocean

4:45 **CLOSING RECEPTION**